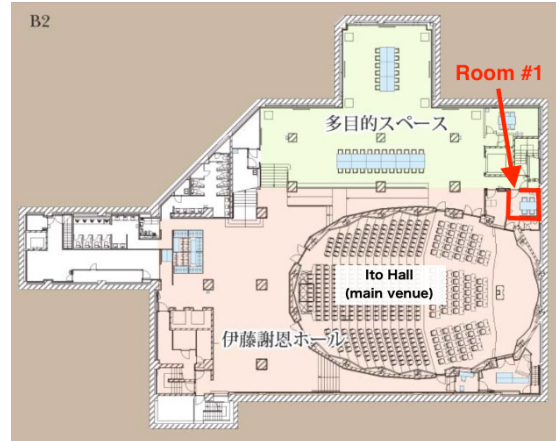


Information for participants with children

Welcome to BLS8! We aim BLS8 to be a child-friendly symposium where everyone can have meaningful time. We set up two rooms for child (baby) care. Please use them freely depending on your purpose.

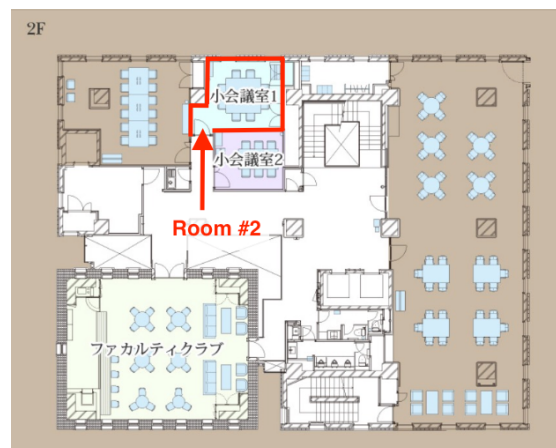
Care room #1: Anteroom

- 2nd basement floor
- Very close to the main venue
- Small room with a sink
- Suitable for breastfeeding & changing nappies.



Care room #2: Meeting Room 1

- 2nd floor
- Same building with the main venue, but need to take a lift
- More space than room #1, with a tiny kid's corner
- Suitable for changing nappies, as well as for parents to stay with their children. Breastfeeding is also possible, but room #1 is more suitable.



- ◆ Please dispose of used nappies **ONLY in the designated bins** in care room #1 and #2
- ◆ Eating is only allowed for children in the care rooms

Dependent Care Room Opening hours

March 4 (Mon)	9:30 – 17:30
March 5 (Tue)	8:15 – 17:30
March 6 (Wed)	8:15 – 17:30
March 7 (Thu)	8:15 – 17:30
March 8 (Fri)	8:15 – 17:00